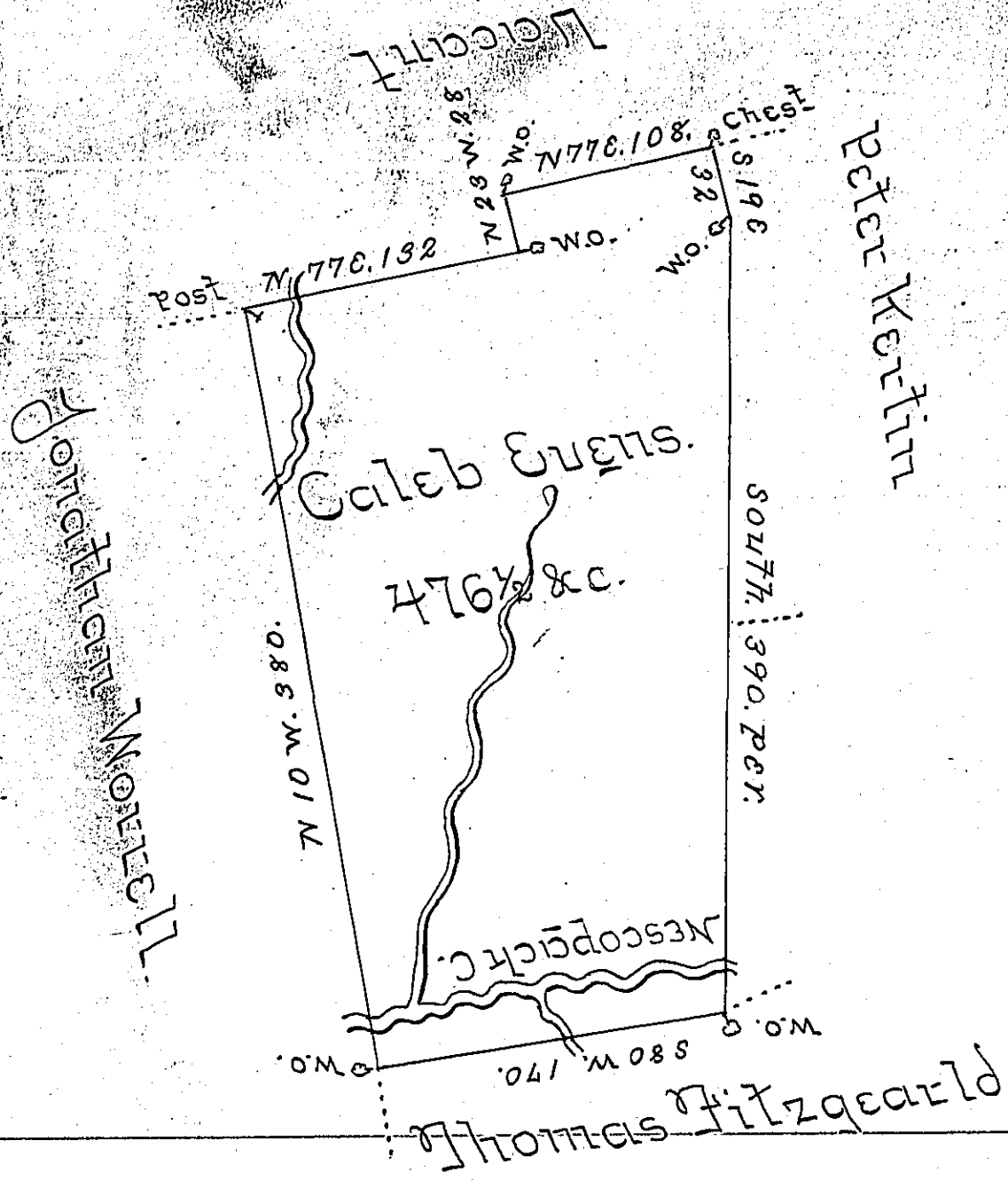
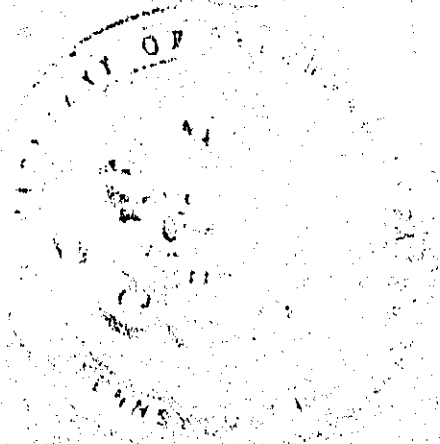


Sug. Loaf -  
LUZERNE



A Draught of a tract of land called  
 Situate on Nescopeck Creek joining Land Survey  
 for Jonathan Worrell & others in Stoke Town-  
 ship Luzerne formerly Northumb<sup>d</sup> County  
 containing four Hundred & Seventy six acres  
 1/2 & Allow<sup>e</sup> (obl) six Percent for Roads &c Survey-  
 ed for Caleb Evans the 11<sup>th</sup> Day of April 1787  
 in Pursuance of a Warrant Voted the 1<sup>st</sup> Day of July  
 1784 by W<sup>m</sup> Gray U.S.  
 No John Lukens Esq<sup>r</sup> }  
 Survey Gen<sup>l</sup> }

IN TESTIMONY that the above is a copy of the original remaining on file in  
 the Department of Internal Affairs of Pennsylvania, made  
 conformably to an Act of Assembly approved the 16th day of  
 February, 1833, I have hereunto set my Hand and caused  
 the Seal of said Department to be affixed at Harrisburg,  
 this third day of October 1904.



*George P. Pennington*  
 Secretary of Internal Affairs.